

Lingyuen Temple, surrounded by the Kuanyin Mountains.

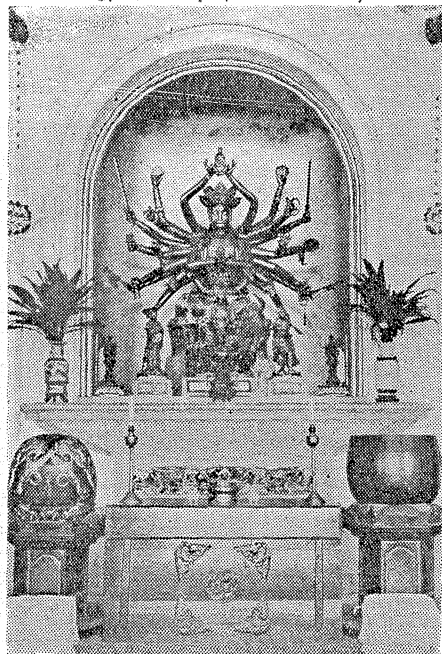
在觀音山環抱中的凌雲寺

勝地 佛教 泰國 臺北

——室料資刊本——

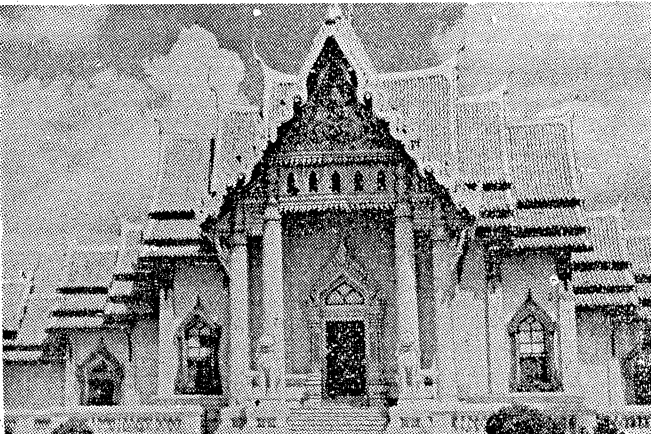
THE BUDDHIST FAMOUS
PLACES IN TAILAND AND
TAIPEI

The Reference Dept.

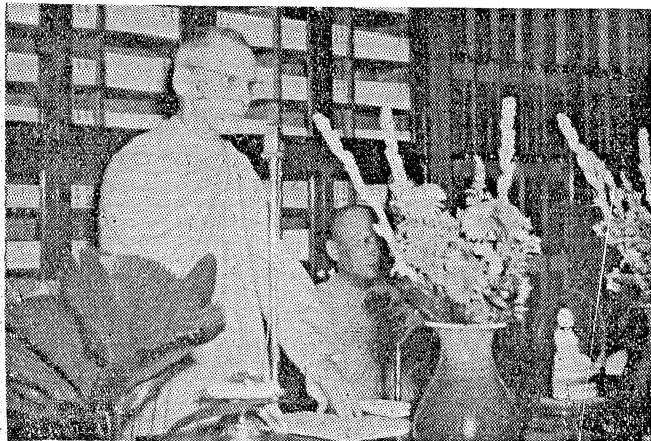


The Image of A Thousand Hand Bodhisatva Avalokitesvara in the Shrine of Linyuen Temple, Kuanyin Mountain, Taipei.

全寺皆用大理石砌成的泰國僧王精舍
臺北觀音山凌雲寺大殿供奉千手觀音像

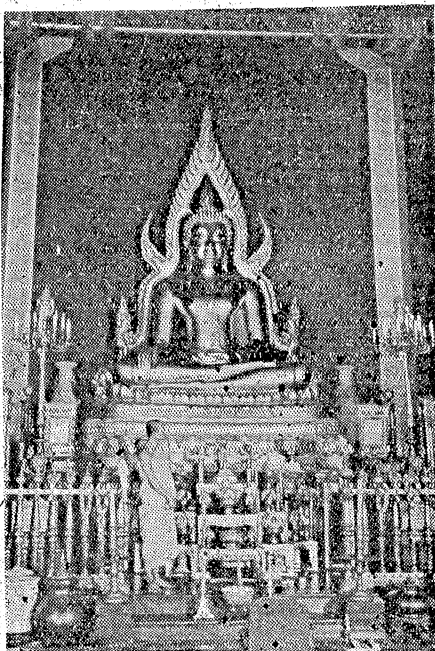


The Vihara of Sangha-raja of Tailand. It is built by Marble.



Bhiksu Binyuthata of England Preaches Dharma at The Chinese Buddhist Association in Tailand.

泰國僧伽最高行政院（又名大理石寺）內供奉之釋迦佛像
英國名僧賓越他陀在泰國說法時



The Image of Sakya Buddha in the Highest Administration (the Marble Temple) of Sangha-raja of Tailand.