



蹟勝寺塔國泰

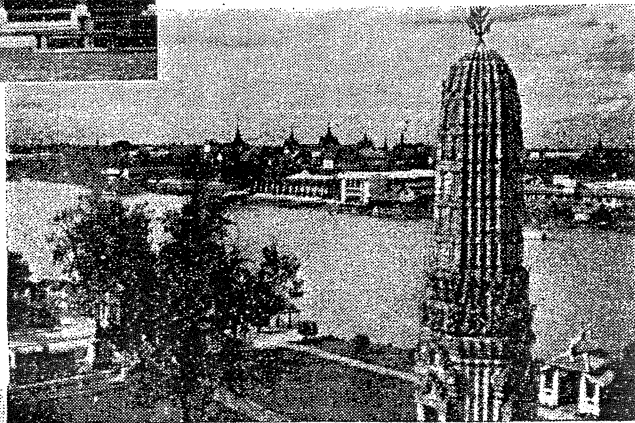
THE SENERY OF THE PAGODAS AND TEMPLES OF TAILAND.

· 室料資刊本 ·

The Reference Dept.

色青供內。寺佛玉之嚴莊大最國泰
家國逢每。寶國之國泰為，佛玉璃琉之
。佛禮往前官百武文率即皇泰；典慶之

The Jade Buddha Temple of Tailand, which is the largest and most magneficent. A blue transparent jade image of Buddha, which is the invaluable treasure of Tailand, is in the shrine. A ritual is held by the king and his officials on every national holiday.



鄭(按)寺皇鄭即塔佛之邊河南湄
為皇世一之朝皇里武天朝前國泰為皇
。統血裔華

Chenghuang Temple, a pagoda beyond the Menam River in Bangkok.

Note: Chenghuang is the name of the imperial family of the last dynasty. The king was a decendent of Chinese origin.

佛臥。像圖塔佛內寺佛般一京泰
。(相文於等相)居所僧務僧國泰是寺

The picture of a pagoda inside every temple in Bangkok. The temple of Lying Buddha, dwelt by the Minister of Sangha of Tailand.

。樹提菩之植內寺佛家皇國泰。(右)
(R) The Sacred Bo Tree in the Imperial Temple of Tailand.

