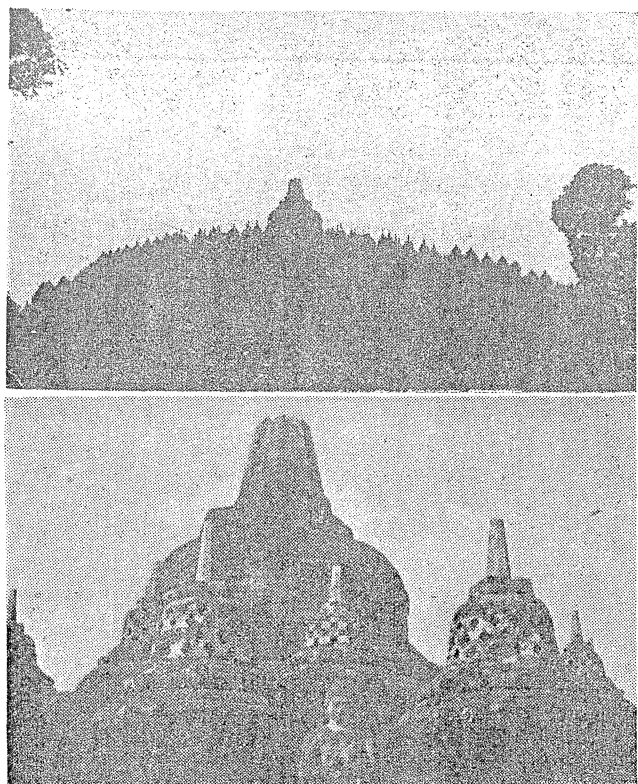


印 尼 爪 哇 之 佛 塔 遺 蹟

A PAGODA IN JAVA, INDONESIA

佛塔位在中爪哇吉都州之高原，在帕帕克山麓，距雅加達約三十九公里，其建築人物及時期，已無正確文獻可考，約在九世紀中葉開始建築佛塔。塔高達四十二公尺，長百二十二公尺，共分七層，下四層作方形，上三層為圓形，可繞登而不可入內。每層有一層臺，寬二公尺餘，以石欄繞之，石欄及長廊壁上皆有石刻之浮雕。佛塔工程浩大，雕刻精工，若非費時百年以上，殆不能成焉。

• 本刊資料室 •



The pagoda is situated on the Kedu Plateau of middle Java, at the foot of the Papak Mountains 39 kilometers from Agata (Batavia.) It was built about the middle of the 9th. century, the exact time and the founder not being known. The height of it is 42 meters, length 122 meters. It is divided into 7 stories' the lower four are square shaped and the upper three are round. You can go up along the outside wall but cannot enter. There is a two meter platform on each story surrounded by stone railings. The railings and walls are full of engravings. It was estimated that its construction took more than one hundred years.

Bodhedrum Reference Section.

